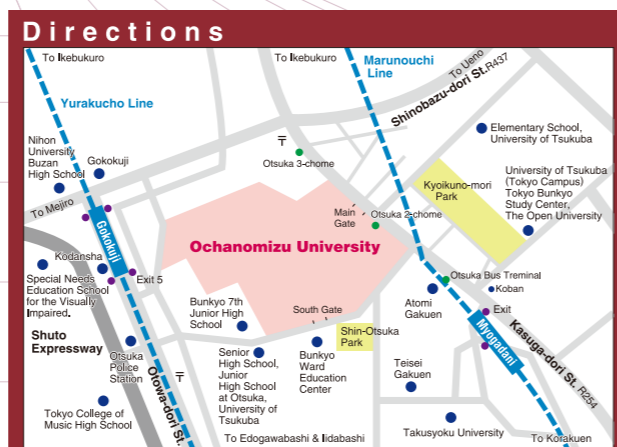


The Global COE Program is implemented through the Ministry of Education, Culture, Sports, Science and Technology and the Japan Society for the Promotion of Science. The purpose of this Program is to selectively support the establishment of education and research centers of international excellence. These centers will train creative researchers, who can lead the world in cutting-edge research environments generated through the enhanced education and research functions of graduate schools, and thus, strengthening the international leadership of Japanese universities. Twelve programs have been selected under the Humanities category in fiscal 2007.



Ochanomizu University



Closest bus stop - Otsuka 2-chome
 Closest Marunouchi Line Station - Myogadani Station (7 min. walk)
 Closest Yurakucho Line Station - Gokokuji Station (8 min. walk)

Science of Human Development for Restructuring the "Gap-Widening Society"

Ochanomizu University Global COE Program

Contact Information
Ochanomizu University Global COE Program Office
 2-1-1 Otsuka, Bunkyo-ku, Tokyo 112-8610, Japan
 Phone/Fax +81-3-5978-5247
 E-mail jimu-gcoe@cc.ocha.ac.jp
 Website <http://ocha-gaps-gcoe.com/>

1. The existence of inequality

- Physical development and health
- Academic skills
- Transition to higher educational level
- Learning opportunities
- Quality of life

Inequality is produced by factors that are beyond the influence of the child's own efforts
 There are social disparities in terms of developmental opportunities.
 Differences exist not simply as differences, but as inequalities that should be rectified

2. Inequality is reproduced

Inequality is reproduced across generations, from parents to children

Figure 1 Program Theme



Ochanomizu University Global COE Program Science of Human Development for Restructuring the "Gap-Widening Society"



Leader, G-COE Program



MIMIZUKA, Hiroaki

The proposed COE will be established at the Ochanomizu University Graduate School of Humanities and Sciences to foster scholarship in the field of human development sensitive to social inequality and social justice. In response to the given changes in the society, the proposed COE envisions scholarship that advances knowledge and at the same time addresses issues critical to our society through both academic training and research activities. Particular emphasis will be placed on the professional development of female researchers.

The Science of Human Development is now expected to help the society rectify the "gaps" or inequalities in society by clarifying mechanisms reproducing various forms of inequalities. We strive for the establishment of a COE to foster both awareness of the inequality issues (Figure 1) and scientific activities. We believe that such a center will be not only unique within the country but also distinctive among the international community.

Project Members

- | | |
|------------------|-----------------|
| Hiroaki Mimizuka | Takashi Hamano |
| Masumi Sugawara | Mika Omori |
| Shigeo Kodama | Akira Sakamoto |
| Nobuko Uchida | Yoichi Sakahira |
| Koichi Hiraoka | Kenji Miwa |
| Toshihiko Yoneda | Kazue Sakamoto |
| Masahiro Omori | Tomoko Takamura |
| Yukuo Konishi | Ki Sook Lee |
| Dinh Hong Thai | |
| Masami Ikeda | Wang Jie |
| Yuko Tarumi | |

Research activities of the proposed COE will be conducted by three research groups: International Inequality Research Group, Educational/Social Inequality Research Group, and Inequality in Childrearing Research group (Figure 2). Three groups liaise with each other to find resolutions for various forms of social inequalities (Figure 3).

Ochanomizu University Global COE Program

Universal model for the rectification of inequalities

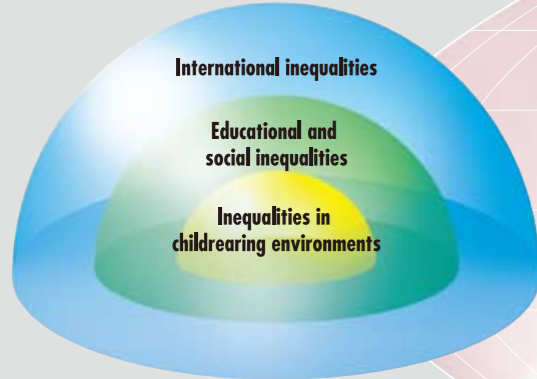


Figure 2 Areas of Social Inequalities

1 International Inequality Research Group:

We will focus on the structures of international inequalities in the context of globalization, and explore educational supports at different developmental stages.

2 Educational / Social Inequality Research Group:

The key issue in this area is to examine mechanisms of inequalities that appear within educational, occupational, and social settings. We will mainly elucidate the structure of inequalities in academic skills, inequalities related to life transitions, and inequalities among old adults from educational and social perspectives.

3 Inequality in Childrearing Research Group:

We will focus on the interactions over time between individuals and their home and educational environments in the context of the childrearing process. Our goal is to clarify the inequalities that arise in childcare quality and the quality of life (QOL) through the course of human development, from a psychological perspective.

Science of Human Development for Restructuring the “Gap-Widening Society”

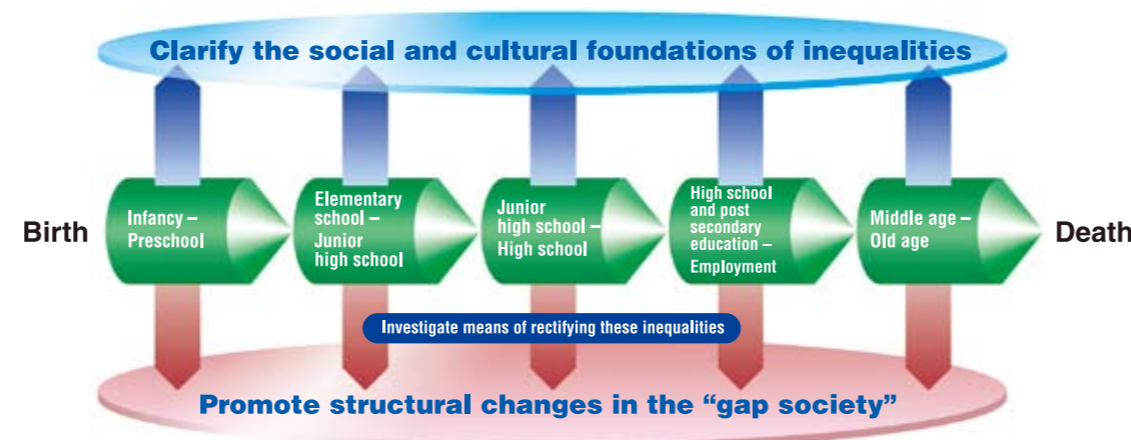


Figure 3 Clarification of the Mechanisms Reproducing “Social Inequalities” across Generations

Independent research

Systems for public calls for research
Collaboration with partner institutions
Exchange student programs
Seminars

Opportunities for presentations

Support Program for research presentations
• Academic Writing in English
• Presentation
Travel grant for graduate students to international conferences

Assistantship / Participation in research projects

Participation in international-standard research projects

Tie-ups

Ochanomizu University Ph.D. Program

Figure 4 Foundational Training Program

The research training program is comprised of the Foundational Training Program (Figure 4) which forms the basis of research training, and the Innovative Training Program for training researchers who are sensitive to the “social justice” that this COE aims to achieve. In the Innovative Training Program, we will devise a research program to promote collaborative interactions between the realms of research and practical applications, based on the premise of the differences and the tension that exists between these two realms.